



# KERLINGARFJÖLL



EIN SKÆRSTA PERLAN Í ÍSLENSKRI NÁTTÚRU

## André Spica



Iceland has so many spectacular naturephenomens and exiting explorations to offer. Becoming a part of the tourist machinery will only let you touch the surface, and hardly that. The first time I came to Kerlingarfjöll, I was breathtaken by the astonishing nature experience. For me, Kerlingarfjöll is a place that I mention together with the words "first time" and "next time". This is not a place to visit only once. I find thermic active areas very exiting, and I also appreciate that the places I visit is not to infected by tourism. For me, Kerlingarfjell



has a smooth balance between tourism, fascilities and the possibilities of hiking around by myself. You can rent a cabin or use a tent at a campground, you can hike in ell marked hikingtrail and you can take part in organized activities. But you can also find time and place to be on your own in these magnificent mountains.

André Spica/[www.spicanatur.no](http://www.spicanatur.no)

## Uwe



When I visited Kerlingarfjöll for the first time three years ago, it was like love at first sight. While I was hiking the famous Kjalvegur, I noticed the mountain range to the East that rose abruptly from the flat landscape of the Kjölur. The distinctive and impressive peaks of Loðmundur, Snækollur and Fannborg towered while their silhouette gave the mountain massif a majestic look. This volcanic landscape is mainly composed of pale rhyolitic rocks, and when the sun shines the result is a marvellous play of colours. Another highlight well worth seeing is the fumarolic activity, which is particularly high in the area of Hveradalir. In the midst of the volcanic opening, a pool was constructed, in which one can bathe in the naturally warm water while taking in the amazing views of the highest peaks of Kerlingarfjöll. After several visits

to Iceland, I know this country quite well and I consider the surroundings of Kerlingarfjöll to be one of the most beautiful landscapes for hiking. It doubtlessly has a certain similarity to the well-known area of Landmannalaugar. Nevertheless, Kerlingarfjöll is also worth a visit.

## Wim van Passel



Kerlingarfjöll, a small but breathtaking volcanic area in the middle of Iceland, is on of those amazing places you must have seen before understanding what's "time" means on our beloved planet. It will take efforts to get there, but it's more than worth!

At the very moment we climbed down from the surrounding hills, we were astonished not only by the secret power of our planet, but also impressed by the variety form and colors in both landscapes and soil. Steamy and smoky beauty everywhere.

We stayed in Ásgarður a settlement comprising service building with a restaurant and some friendly cozy lodges, within a convenient walking distance from the main geothermal area. Dry, warm and reliable and situated in a beautiful landscape with a small river and plenty of walking trails, open for almost all the time of the year you can reach this abandoned area in central Iceland. An absolute "must" for the real, unspoiled nature lovers.



Wim van Passel / [www.timelessmoments.nl](http://www.timelessmoments.nl)

## Chloe Duperrin



I had the opportunity to spend the summer 2010 in Kerlingarfjöll as a staff member, and I particularly enjoyed my time there among the wild and unspoiled nature. The hotel and cabins are located in a small valley hillside, where you just have to take a short walk to contemplate the panorama around. Hiking is the main activity offered by Kerlingarfjöll, with the climbing of the mountains Fannborg and Snaekollur, but it is also possible to relax in the natural hot pool

hidden in the heart of the mountain. In both cases the scenery is breathtaking, and the Highlands are still my favorite part of Iceland.

Chloe Duperrin, worked at Kerlingarfjöll the summer of 2010



## Simon Carr



Kerlingarfjöll is a unique place in Iceland. For me, as a glaciologist, it is one of the few places in Iceland that preserves mountain glaciers. The beautiful glaciers flanking Kerlingarfjöll are extremely sensitive to climate change, due to their small size and location. I have installed a weather station next to the Jökulkinn, and am conducting studies on the glaciers to monitor how they are responding to changing climate over the coming decades. Already this research suggests that within 20 years, the glaciers at Kerlingarfjöll may disappear completely, and that about 10%

of glacier melt is caused by geothermal heat, rather than climate change. So you need to visit the unique hot springs and glaciers of Kerlingarfjöll while you can, before the glaciers finally disappear!

Dr Simon Carr. Department of Geography, Queen Mary University of London,



## Gerald Friederici



Kerlingarfjöll lies not only in the heart of Iceland, it represents in miniature what makes Iceland: Fire, ice, volcanoes, glaciers and endless space. From the F35 easily accessible via two small river crossings, we attracted the beautiful location of the Kerlingarfjöll camp. Sheltered at the open end of a canyon the camp has several cabins with different terms and furniture. This camp with its hot-water pool is the excellent starting point for tours into the rugged mountains of the Kerlingarfjöll and to the Hotspring Area at around 1000m altitude. Marked paths lead through a marvelous colorful field where fire and ice come together. Above all the ski resort is located on

Snökollur's 1477 m high summit, from where in good weather conditions you can see over the vast highland areas to the southern and northern edge of Iceland. We spent some wonderful days at Kerlingarfjöll and we will come back again – for sure!

Gerald Friederici i, German visitor



# ÁSGARÐUR

Ásgarður is a green valley in the midst of the highland's desolate landscape. Ásgarður is an important resting place for visitors of Kerlingarfjöll.

It has various facilities, listed below, and provides accommodation for a total of 76 people in 11 huts.



Camping Site



Restaurant



Showers



Cooking Facilities and Tables



Petrol Station



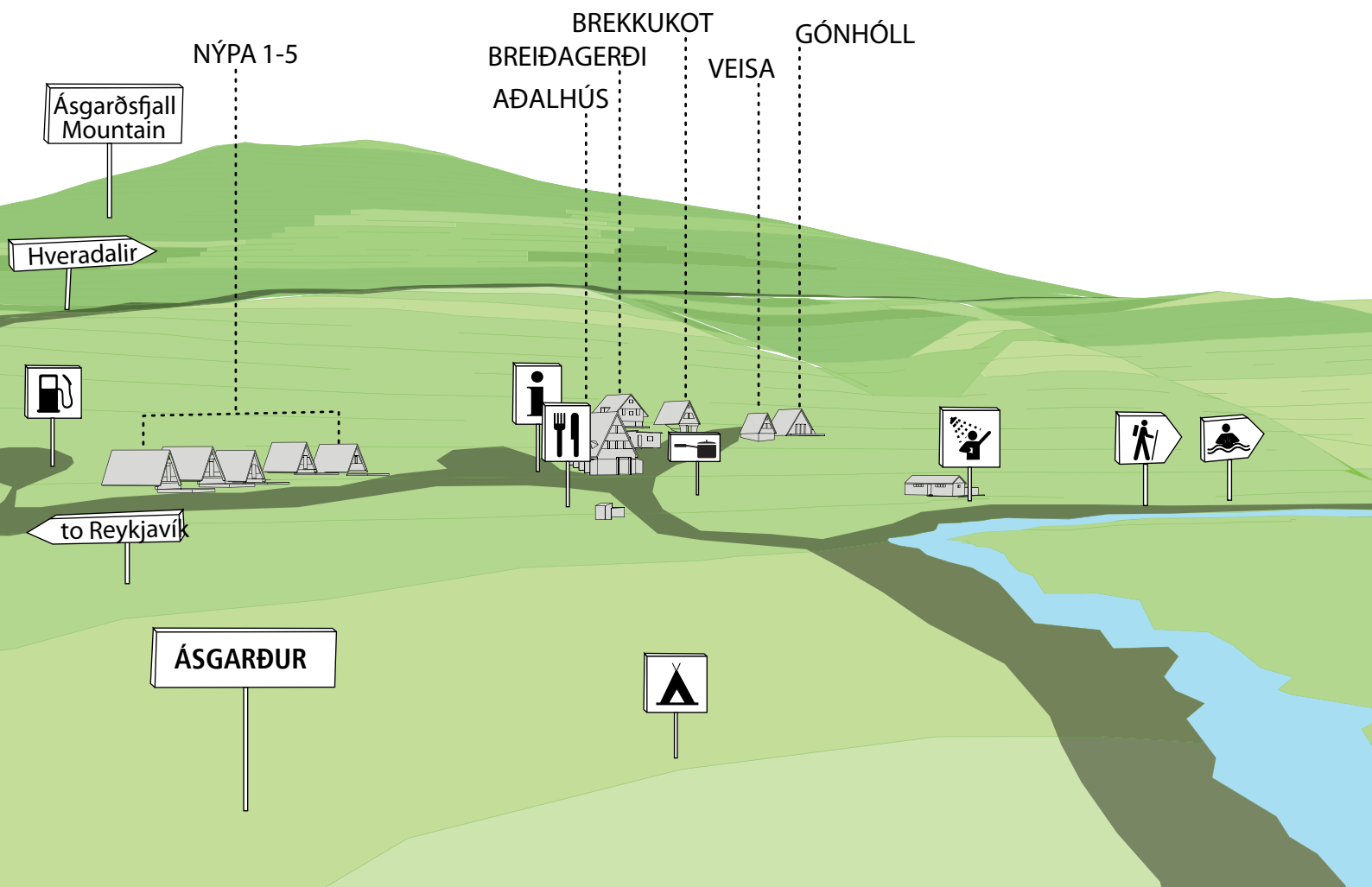
Tourist Information



Hiking Trails



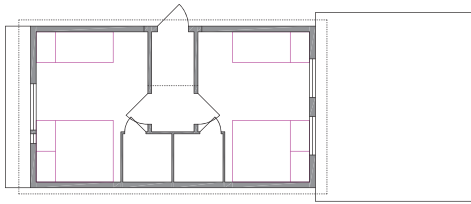
Natural Pools



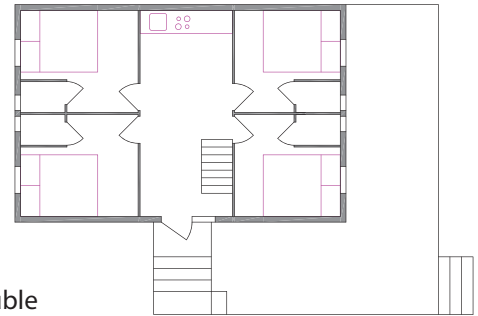
# ACCOMMODATION



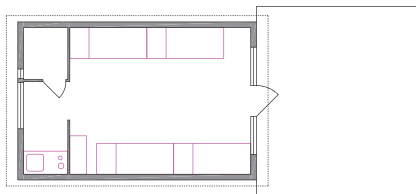
**AÐALHÚS - THE MAIN BUILDING**  
 Restaurant  
 WC's  
 Sleeping-bag accommodation for 28 people



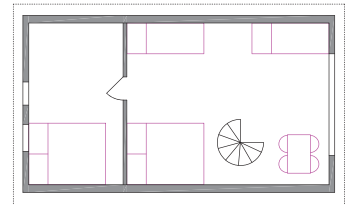
**NÝPA 1**  
 Two en-suite double bedrooms  
 Patio



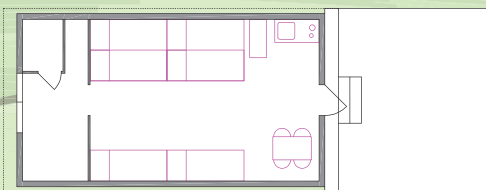
**BREIÐAGERÐI**  
 Four en-suite double bedrooms  
 Kitchenette  
 Patio



**NÝPA 2 and 3**  
 Four double bed house  
 Kitchenette, WC  
 Patio



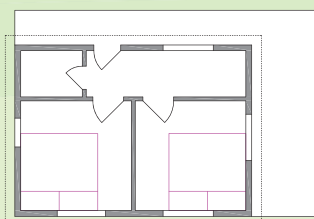
**BREKKUKOT**  
 Four double bed house  
 Kitchenette, WC  
 Patio



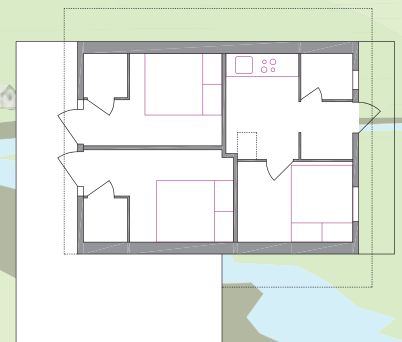
**NÝPA 4 and 5**  
 Six bed house  
 Kitchenette, WC  
 Patio



**VEISA**  
 Double bed house  
 WC  
 Patio



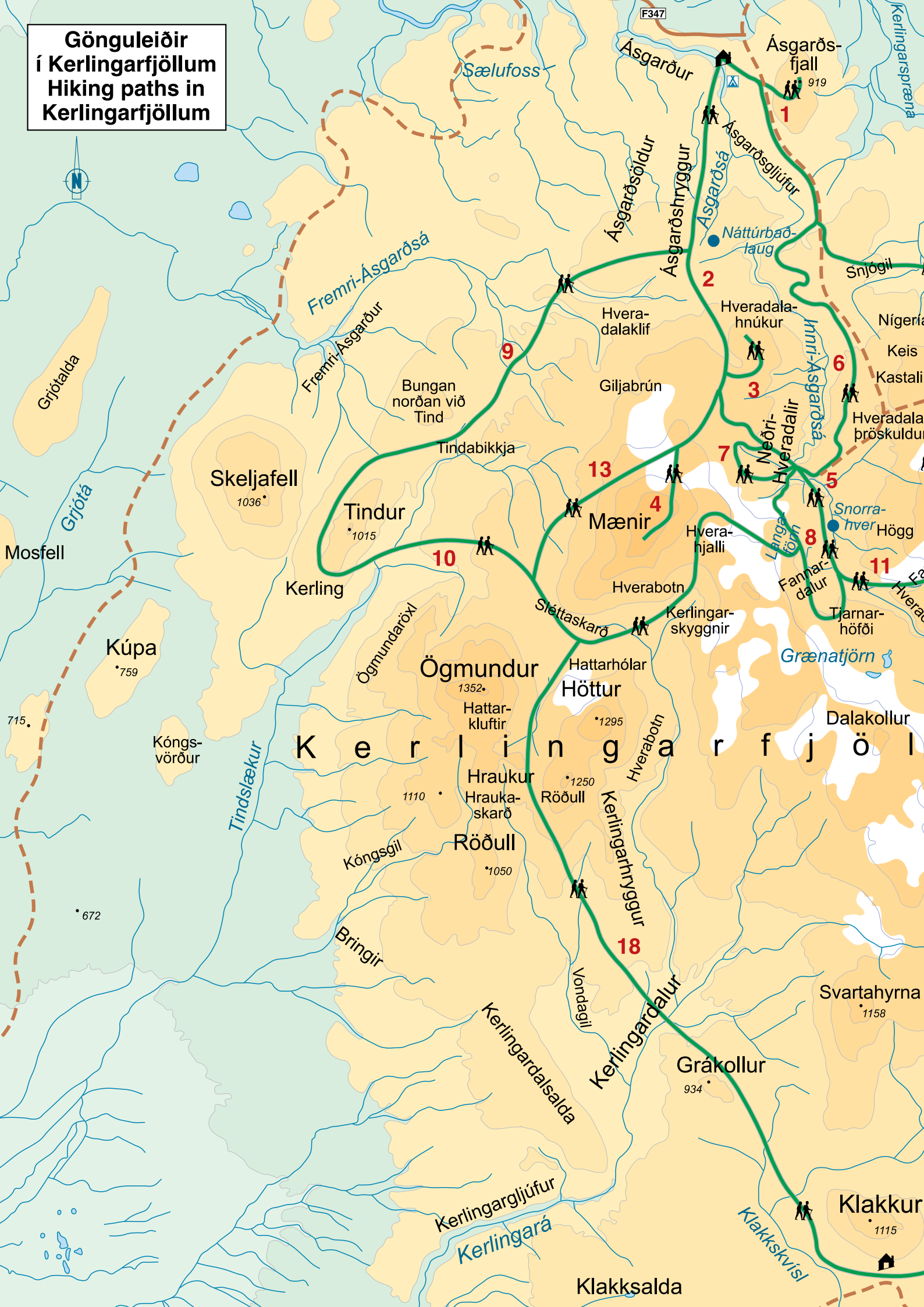
**LA PLATA**  
 Two double bedrooms  
 WC  
 Patio with amazing views



**GÓNHÓLL**  
 Two en-suite double bedrooms  
 One en-suite double bedroom with kitchenette  
 Patio

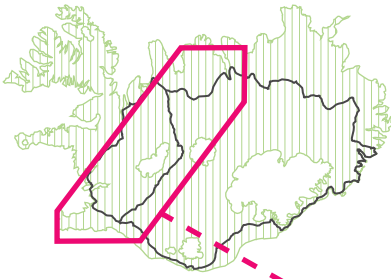
# Gönguleiðir í Kerlingarfjöllum

## Hiking paths in Kerlingarfjöllum

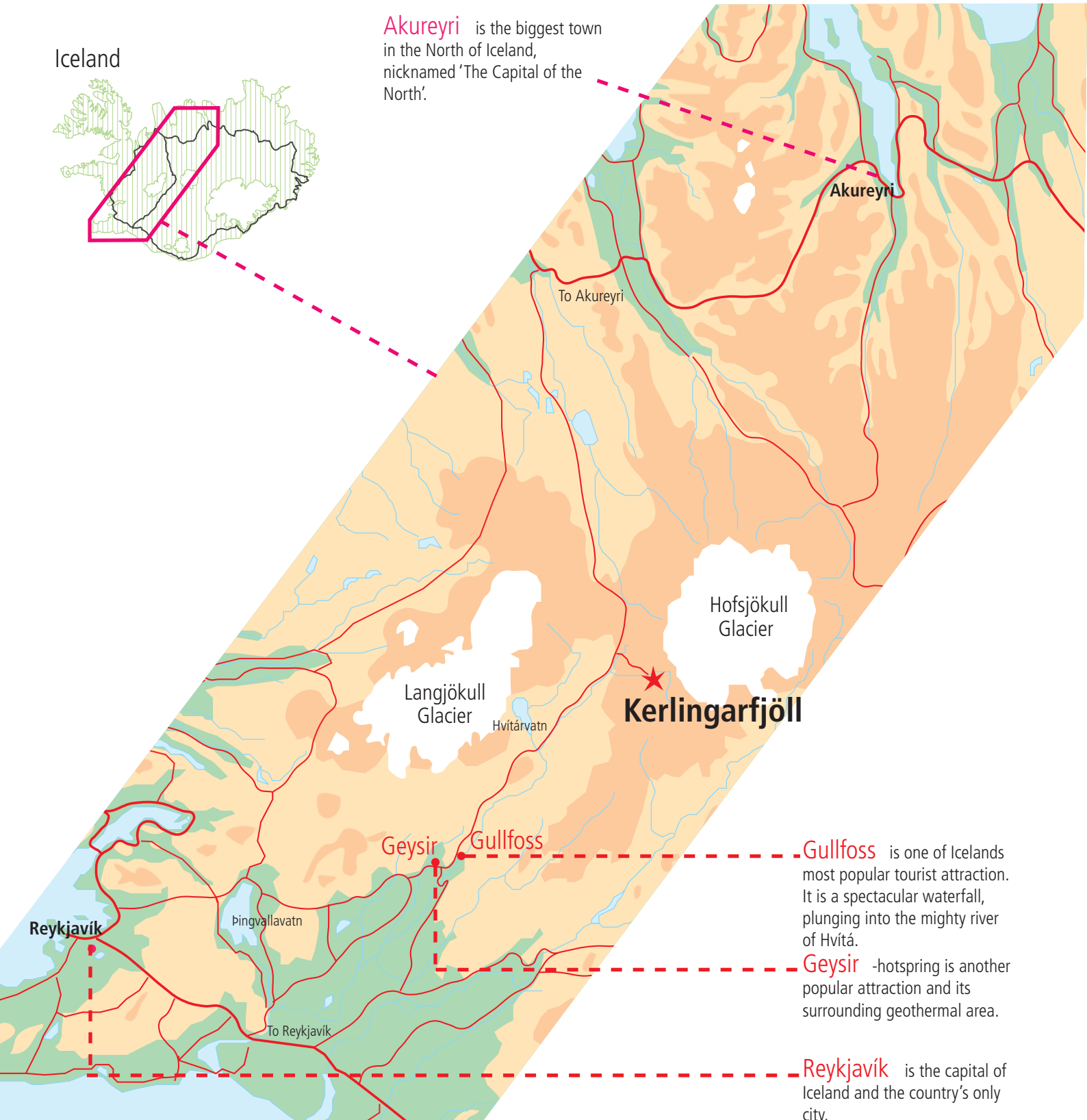




Iceland



**Akureyri** is the biggest town in the North of Iceland, nicknamed 'The Capital of the North'.



Akureyri

To Akureyri

Hofsjökull  
Glacier

Langjökull  
Glacier

Hvítárvatn

**Kerlingarfjöll**

Geysir

Gullfoss

Reykjavik

Þingvallavatn

To Reykjavik

**Gullfoss** is one of Iceland's most popular tourist attractions. It is a spectacular waterfall, plunging into the mighty river of Hvítá.

**Geysir** -hot spring is another popular attraction and its surrounding geothermal area.

**Reykjavik** is the capital of Iceland and the country's only city.

**Kerlingarfjöll**

Maentan Resors

Road 35/F346

Phone :+354-664-7878

[www.kerlingarfjoll.is](http://www.kerlingarfjoll.is)

[info@kerlingarfjoll.is](mailto:info@kerlingarfjoll.is)